

2 BEDROOM | 1110 - MOORHEAD

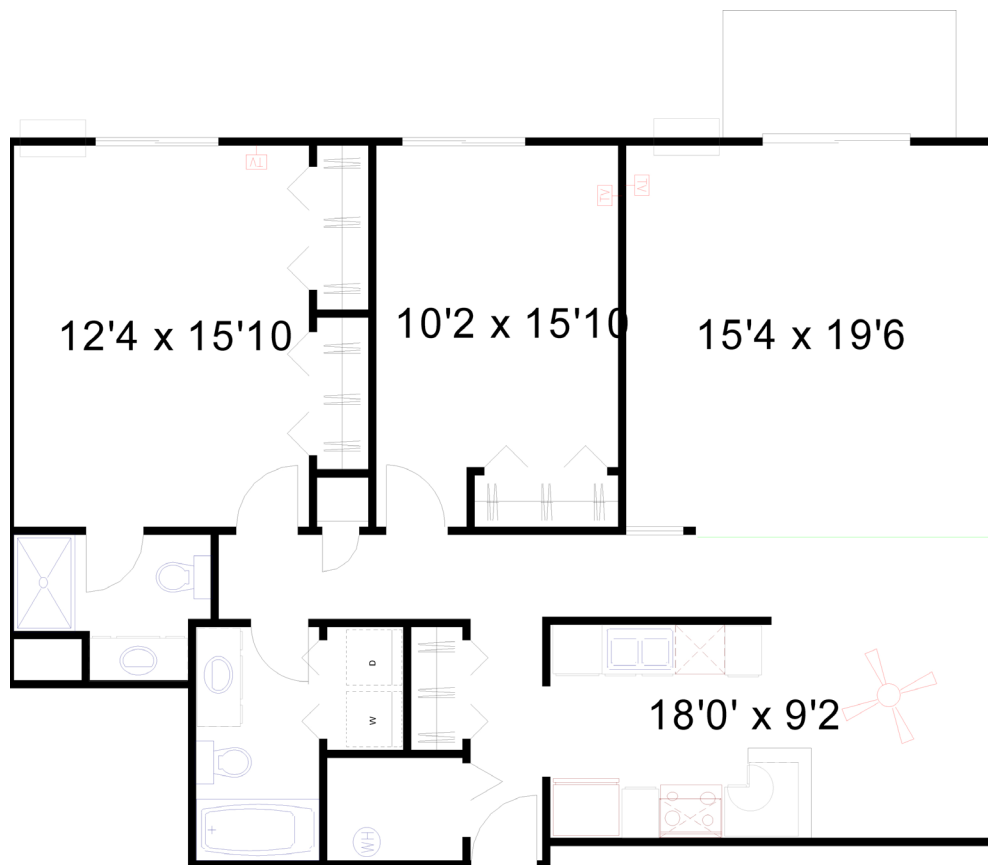
1110 28TH AVE S | MOORHEAD, MN

FEATURES & AMMENITIES

- No Smoking On Entire Premis
- Water Paid
- Single or Double Garage Included
- Stainless Steel Appliances*
- Full Kitchen, Glass-top Range, Microwave, Dishwasher, Ice maker, etc.
- Washer & Dryer In-Unit
- Dual A/C Units
- Balcony
- 24 Hour Fitness Center
- Community Room
- Controlled Access
- 24 Hour Video Surveillance

* Included in Select Units

2 BEDROOM | 2 BATH | 1,210 SQ FT



SKAFF
APARTMENTS

Moorhead Office | 1102 28th Ave S | Moorhead, MN 56560

WWW.SKAFFAPARTMENTS.COM | 218-236-1193